



SEAFRONT SCOOP

2016

KAREN'S CATCH UP

Dear Parents,

The term is already filling up with some amazing opportunities for our children that will complement and extend their learning. Last week the grade 3-6 children were involved in the Robogirls initiative which aims to increase female participation in Science, Technology and Engineering, through fun and educational initiatives. We were extremely lucky to have both our boys and girls involved, with the girls in grade 5/6 having an extra session. It was an amazing experience for everyone with wonderful learning and engagement taking place. A big thank you to Mel Kelly for organising this event.

Some other great educational opportunities coming up for our children are; grade 6 children will be attending the WSC production of a Mid Summers Night Dream, the whole school will have the Bentleigh SC Band playing next week, grade 3/4 will begin Community Connections this term, The NED show is coming back and the grade 5/6 children will be involved in Science week activities.

2017 Prep Open Night - Wednesday 27th July, 6.00-7.00pm

Don't forget there is a 2017 Prep Open evening for families to have a tour of our school and meet with myself, Tracey Wilson and our grade 6 school captains. It is a great opportunity to see the wonderful educational, social and emotional opportunities that San Remo has to offer your child. If you know anyone who might be interested please let them know. We would love to see them there.

NED show

The NED show will once again be visiting our school next Tuesday afternoon at 2.30pm, siblings accompanied by their parents are welcome to attend. NED stands for Never Give up/ Encourage others/ Do your best. Not only does the NED presenter give the children tips and tricks on how to use a yoyo but they also support our school values and encourage children to be resilient. Throughout that week children can also purchase a yoyo and practice at recess and lunchtimes in a special designated area (TBC). Children can bring their own yoyo's to school from home, they do not need to purchase one. There will also be some spare yoyo's for children to use if they wish.

Have a great week, Karen

Ph 56785354 fax 56785310

E: san.rem.ps@edumail.vic.gov.au

Web: www.san-remo-ps.vic.edu.au

OSHC. Ph: 0459 724 685

For all payments: Bank Australia

BSB: 313140 Acc #: 12023686

IMPORTANT DATES!

JULY

Fri 22nd	Gr 6 Excursion
Mon 25th	Bentleigh SC Band
Tues 26th	The NED Show
Tues 26th	School Council
Fri 29th	5/6 Dist Basketball

AUGUST

Fri 5th	3/4 Dist Basketball
Fri 5th	Pub Raffle

SEPTEMBER

Fri 2nd	Pub Raffle
Tues 6th	School Council
Tues 13th	Bike Ed Challenge
Fri 16th	Last Day Term 3
Fri 30th	Pub Raffle

OCTOBER

Mon 3rd	Term 4 starts
Fri 7th	Dist Surfing
Fri 14th	Dist Softball
Fri 14th	P-2 Swimming
Tues 18th	School Council
Fri 21st	P-2 swimming
Fri 28th	P-2 swimming
Fri 28th	Public Speaking Comp



BREAKFAST CLUB

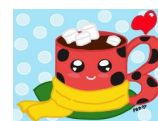
This week's Breakfast Club included Dutch pancakes with maple syrup, toast, fruit and milo.

Next Tuesday we will be offering banana muffins and blueberry muffins, toast, fruit and milo.



HOT CHOCOLATE \$2

We have decided to try hot chocolate instead of soup this term. From next Thursday 21st July we will be offering Hot chocolate @ \$2 per mug **Students MUST provide their own plastic mug**. Orders must be placed in the tub outside the staffroom by 9am on Thursday mornings. Students will collect their order at 1:40pm in the grade 3/4H room after eating their lunch.



NO RUNNING CLUB

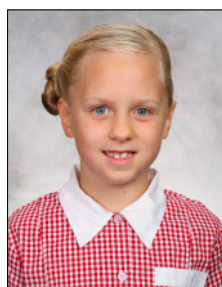
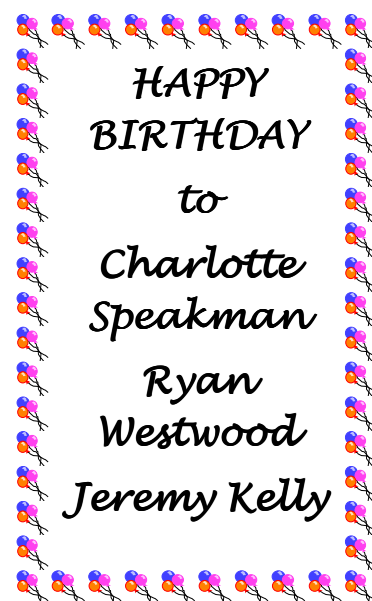
Due to the cold, wet and wild conditions in term 3 there will be NO running club this term.

PILATES ... I would like to offer a kids pilates/yoga session from 8:15am-8:45am on Wednesday mornings instead. Classes will be run in a warm room I promise. *Virginia Baxter*



WORKERS OF THE WEEK Week Ending 15/7/16

- P/1 M Cecilia for her enthusiasm for writing.
- P/1 W Kai for encouraging others to do their best.
- 2/3S Seth for always being a fantastic, hardworking and happy student.
- 3/4 M Abby for her super reading at home.
- 5/6 G Marcelle for her creative robot design and commitment to working to the best of her ability.
- 5/6 T Bridgette for persisting with challenging maths tasks.
- Specialist Award** Milla for being the only student from Prep to Grade 4 who remembered to create a healthy food poster for PE. - Cathy K



NO LUNCH ORDERS

Please note that on Friday 29th July and 5th August there will be **NO lunch orders** available. The fundraising group will be holding a sausage sizzle at school on those 2 weeks for the District Basketball and all SRPS students are able to purchase their lunch if they wish to do so.

BBQ & CAKE STALL

On Friday 29th July and 5th August the Fundraising committee are holding a BBQ and cake stall during the District Basketball championships. Students will be able to purchase a sausage in bread for \$2 and a slice/cake from 50c-\$2 each. Tea/coffee and hot chocolate will also be available for \$1 per cup.

CAKES / SLICES - DONATIONS and VOLUNTEERS needed

As mentioned above, we need cakes, slices, scones, muffins etc for our cake stall during the District Basketball Championships on Friday 29th July and 5th August. If you are able to bake a cake or slice please let Roz know in the office. We will also be needing helpers to man the stall on the two days. If you are able to assist please contact Roz in the office.

MULCH - VOLUNTEERS

We have had a load of mulch delivered to the school today to be spread on our gardens. If you can help out for an hour or so at any time during this week please see Roz in the office to organize equipment etc.

We will be ordering playground soft fall mulch soon too and we will need energetic volunteers to help spread.

GRADE 6 EXCURSION

Permission forms went home yesterday for all grade 6 students to attend a performance of "A Midsummer Night's Dream" by WSC students. All forms and payment must be handed in to the office by Thursday. No form or payment, no attendance.



COMMUNITY CONNECTIONS

Do YOU have a skill you could teach our children? Are you available on Wednesdays from 2:30-3:30pm to run/help run an activity with a small group of students?

We are hoping to again offer all grade 3 and 4 the chance to participate in Community Connections. Community Connections was initiated to provide students with the opportunity to undertake different activities with the assistance of various community groups. In order to run this fabulous program we need the assistance of parents, guardians and community members.

In previous years we have run activities such as cooking, art/craft, gardening, fishing, woodwork, fitness, photography and more. If you would like to take part in this fabulous program please contact the school as soon as possible so we can organize groups.

NO STANDING ZONE

Please do NOT stop or park in the No Standing Zone in Thomas Grove. A Bylaws officer from the Bass Coast Shire has been patrolling the No Standing zones around our school. He has had to warn a few parents that continue to drop off their children by parking illegally. Please note that fines will be issued in future. Please remember our safest and preferred parking area for student drop off or pick up is at the top of Wynne Ave in front of the Recreation Centre.

Please do NOT park in or walk through the staff car park to drop off or pick up your child.

There are still some parents walking their child/ren through the staff carpark. This is a huge safety issue with not just staff arriving and leaving the car park but also with delivery trucks etc using the area.

Help!

SCHOOL TIMETABLE

MON

Music
Student banking
3pm Assembly

TUES

Breakfast Club 8:30am
Music program & Band

WED

Japanese
Gr 5 & 6 Library
Gr 5 & 6 PE
Gr 3 & 4 Art
Sushi orders

THUR

Gr P, 1, 2, 5 & 6 Art,
Gr P-4 PE
MARC Library Gr P-4
Hot Chocolate 1:40pm



Open for VIEWING on

Mondays and Fridays
8.30am-9am (not open in the afternoon)

Tuesdays, Wednesday and Thursdays

8:30am- 9am & 3.30pm-3:50pm

PURCHASES: Uniform orders can be placed at anytime by dropping it in the box in the school office with payment.

