



2017

# SEAFRONT SCOOP

## KAREN'S CATCH UP

Dear Parents,

### Thank you

I have two things to thank everyone for this week. The first is to say thank you to everyone for your support and concern over the vandalism at our school last week. It was wonderful to feel that support and it was also wonderful to get similar support from the community. Together we will make sure that, whoever did this, will not do it again and get away with it.

The second is to say thank you to the parents who were able to meet with the review team this morning. We want to take San Remo from 'good to great' and to do this we need everyone's input. I am looking forward to letting you know about the feedback from the review over the next few weeks.

### Welcome to our new Japanese teacher

I would like to welcome Corina Suidgeest to our team. Corina will be teaching our children Japanese, starting term two. She will be with us on a Tuesday and will be continuing on with the wonderful work that Tomoko began over two years ago. We look forward to having Corina and Japanese back in our school.

### Head Lice

I have been informed of a few cases of head lice have been found in children's hair. I cannot say enough, please check your child's hair EACH WEEK for eggs or head lice. The earlier the detection the better for all.

We will be conducting a head lice check over the next 2 weeks and will be following up with another a week later. If eggs or head lice are found, parents will be asked to pick their child up and treat their hair. If you are able to help check for head lice, please let me know and you will become part of the team to try to eliminate them from our school.

### Leave

Rusty Steel will be on leave from Friday 17th to Monday 27th March (inclusive). Mrs Kelly Pappas will be replacing him.

Have a great week,

Karen



Ph 56785354 fax 56785310

E: [san.rem.ps@edumail.vic.gov.au](mailto:san.rem.ps@edumail.vic.gov.au)

Web: [www.san-remo-ps.vic.edu.au](http://www.san-remo-ps.vic.edu.au)

OSHC. Ph: 0459 724 685

For all payments: Bank Australia  
BSB: 313140 Acc #: 12023686

## IMPORTANT DATES!

### MARCH

Fri 17th	National Ride2School day
Tues 21st	School Council 7pm
Wed 22nd-Fri 24th	5/6 CAMP
Fri 24th	Pub Raffle
Mon 27th	Easter Raffle drawn
Wed 29th	School Sports
Fri 31st	Last day term 1

### APRIL

Tues 18th	Term 2 starts
Tues 25th	Anzac Day
Fri 28th	District Athletics
Sun 30th	Working Bee 8am

### MAY

Mon 1st May	Fundraising Mtg 2:30pm
Wed 24th-Fri 26th	3/4 CAMP

### JUNE

Thurs 1st	Division Cross country
Fri 2nd	District Football/Netball
Mon 12th	Queen's B'Day pub hol
Fri 30th	Last day term 2

### JULY

Mon 17th	Start Term 3
----------	--------------

### AUGUST

### SEPTEMBER



**WORKERS OF THE WEEK** Week Ending 10/03/2017

- P/1 H Aija for a good weekend recount.
- P/1 W Kai for showing great 'Bounce Back' skills.
- 1/2 S Lily for trying SUPER hard on her writing and not getting stuck!
- 3/4 M Layla for never giving up when working in class.
- 3/4 T Hope for her fantastic 'Big Write' writing piece.
- 5 G Ashton for working hard in reading groups and completing all his work.
- 6 H Isabelle for putting in a super effort to use punctuation in her writing.

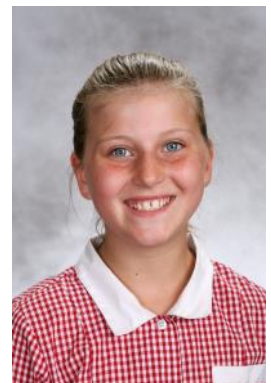
**HAPPY BIRTHDAY**

Talia Gunn

Anaia James

Kienna Payne

Alana Vanderstaay



**GRADE 5/6 CAMP - Wednesday 22nd to Friday 24th March**

The grade 5/6 camp to the city is fast approaching.

**Permission and medical forms should have been returned to school by now. If you have not returned either form please do so A.S.A.P.**

**Final payment is due by Monday 20th March unless other arrangements have been made with the office.**

This will be an exciting camp which supports our curriculum. Activities will include a guided tour of Old Melbourne Gaol, Parliament House, Immigration Museum, MCG sport museum, Ice Skating, River Cruise to Science Works.

**Grade 3/4 Forest Lodge Camp—Wednesday 24th to Friday 26th May**

Permission and medical forms have been sent home and are due back as soon as possible.

A \$50 deposit is required by Monday 27th March with the balance due Monday 22nd May.

Parents who are having any financial difficulty to pay for camp, please see Karen. Payment plans are available in consultation with Karen. Children who receive C.S.E.F can use this towards the camp.

## 2017 EASTER RAFFLE

The Easter Raffle is fast approaching! One set of tickets for each family have been sent home with students today. The tickets are \$1.00 each. Sold ticket stubs should be returned with the money in the envelope provided, to the office by Friday 24th March. The raffle will be drawn at school assembly on Monday 27th March.

First, second and third prizes have been kindly donated by our local supermarkets. This is a fun fundraiser to raise money for much needed upgrade of our junior playground and we appreciate your support.

Extra tickets are available at the office if needed.



## SUPERVISION OF STUDENTS

Students are supervised in the school yard each day. Supervision begins before school from 8.45am to 9.00am and finishes after school from 3.30pm to 3.45pm each day. Should your child need to attend outside of these hours please enroll them in our OSHC program.

## NATIONAL RIDE2SCHOOL DAY

Friday 17th March is National Ride 2 School. We will tally up the number of students who ride their bike, scooter or skate board to school as well as those students that walk to school on that day. Put the date in your calendar.

## RUNNING CLUB

Running Club is a great way to get fit and have fun! It is on Wednesdays at 8am. Please fill in a permission slip, which is available from the office prior to Wednesday. I hope to see you there. Ms Baxter.

## SCHOOL SPORTS

It is that time of the year again where we have our fabulous school sports day. This year it will be on Wednesday 29<sup>th</sup> March from 10.00am onwards, culminating in the parents/teachers vs grade 6 student relay! For those who are keen, start training as it usually occurs around 3pm.

It is a fabulous day with the whole school participating in events such as discuss, sprints, long jump and bean bag throw. We could not do the day without parent support though. If you are able to help, even for an hour, please let us know. Siblings/toddlers are welcome to come and enjoy the day with us (under parent supervision).

## C.S.E.F.

If you have a health care card or pension card then you may qualify for assistance to pay for camps, sports and excursions. If you have not signed a form and provided a copy of your card then please bring it to the school office ASAP so we can make an application for you. Please see Roz in the office if you are unsure.

## FUNDRAISING MEETINGS

We will be having a meeting on the second Monday of each term. The next being Monday the 1st of May at 2:30 before school assembly. Please come along to share ideas and if you can help in any way. This year we are focusing on raising funds for our junior playground.

## WORKING BEE

We will be having a school working bee on Sunday 30th April (Early Term 2) from 8am to 12 noon. If you can spare an hour or two that would be great. This is a great opportunity to help out and meet some of our school community and enjoy a BBQ lunch on the day.

## FUNDRAISING—PUB RAFFLES

There was an incorrect date for the March Pub Raffle in last weeks newsletter—The next Pub Raffle will be on **Friday 24th March**—We need 3 more helpers. Please see the office if you can help.

### 2017 Pub Raffle Dates:

Friday 24th March	Friday 21st April	Friday 19th May
Friday 16th June	Friday 14th July	Friday 11th August
Friday 8th September	Friday 13th October	Friday 3rd November
Friday 1st December		

## COMMUNITY ANNOUNCEMENTS



### **Cancer Services Survey for Gippsland and surrounds Gippsland Cancer Connections (GCC) project**

Complete the survey today, share details of your experience including suggested contacts, resources and health services options for people living with cancer.

Volunteer community members are working together with Bass Coast Health to develop a web directory on the BCH website. The directory aims at improving (or aims to improve) awareness and access to local and regional health cancer service options.

*"After 7 months of travelling to Melbourne I learnt I could have the same treatment for my cancer, 20 mins from home in Leongatha"*

#### **To complete an electronic version**

Go to the Bass Coast Health website [www.basscoasthealth.org.au](http://www.basscoasthealth.org.au)  
Click on the [cancer survey link](#) under Latest News

#### **Paper based version of the GCC Survey**

Paper versions of the survey are available in any Bass Coast Health reception (*Wonthaggi, San Remo and Cowes*).

Return your completed survey **to any BCH reception or send to:**

**Bass Coast Health  
Gippsland Cancer Connections Project  
1 Back Beach Rd  
SAN REMO VIC 3925**

#### **Please complete and submit by Friday 17th March 2017.**

Please don't miss this opportunity to contribute to the new Gippsland and surrounds cancer connections webpage!

All enquiries to [carmel.ohea@basscoasthealth.org.au](mailto:carmel.ohea@basscoasthealth.org.au)

## SCHOOL TIMETABLE

### MON

Music program  
Student banking  
3pm Assembly

### TUES

Music program & band

### WED

Gr 5 & 6 Library  
Gr 5 & 6 Gr 3 & 4 Art  
Sushi orders

### THUR

Gr P, 1, 2, 5 & 6 Art  
Gr P,1,2 & 3,4 PE  
MARC Library Gr P- 4

## UNIFORM SHOP

Open for VIEWING on

**Mondays and Fridays** 8.30am-  
9.15am (not open in the afternoon)

**Tuesdays, Wednesday and Thurs-  
days**

8:30am- 9:15am & 3pm-3:45pm

**PURCHASES:** Uniform orders can be placed at anytime by dropping it in the box in the school office with payment.

EXPRESSIONS OF INTEREST  
**All Abilities Dance Group**

*Do you like to dance? Do you like to meet new people? Do you like to have fun?*

We are local Mums' seeking interested participants, parents & carers to help start up a new **all ages and all abilities** dance group for Bass Coast/South Gippsland area.

Beginning in Wonthaggi on **SATURDAY, APRIL 22<sup>ND</sup> 2017**, this is our 1<sup>ST</sup> class and will be offered **FREE**.

We will be part of the '**BAM Allstars dance crew**', which currently runs dance groups and performs throughout Melbourne and surrounding areas. You can find more info at [www.bamallstars.org.au](http://www.bamallstars.org.au), check them out on Facebook 'BAM Allstars' or YouTube – BAM Allstars.

Classes for ages 2 & 1/2 – 65 years+ will be held on **SATURDAY** mornings during School terms only. Different class times for different ages.

To register your interest or for more info please email



**Positive Parenting Telephone Service**



**This program is offered to parents, grandparents caring for their grandchildren & carers of children aged 2 – 10 years**

Our free ten week program aims to assist you to:

- \*Develop a stronger and more positive relationship with your child/children
- \*Encourage behaviour you want to see in your children
- \*Manage everyday behaviour problems
- \*Set rules & limits
- \*Teach new skills

This program is completed via a workbook or online modules which are supported by weekly phone calls with a trained parent educator. All of this can be done from the comfort of your own home at a time that suits you.

**Interested?**

For more information please phone

**1800 880 660**

ENROLMENTS TAKEN ALL YEAR ROUND

*Enrol now and make a positive start last a lifetime*



THE BASS COAST SKATE STRATEGY

**DEC 2016 ► PROJECT UPDATE NO.1**

WHAT IS A SKATE STRATEGY?

The skate strategy will outline **how** community needs can best be met, **what** type of facility should be provided and **where** the most appropriate locations are.



WE HAVE BEEN...

1

Researching demographic patterns within your community.

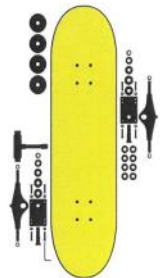
2

Assessing your existing skate facilities and what's missing.

3

Investigating current trends in the Bass Coast skate culture and emerging styles both locally and globally.

HELP BUILD SKATE IN YOUR COMMUNITY



WE HAVE FORMED A GROUP OF 15 COMMUNITY REPRESENTATIVES



They are helping us to understand the Bass Coast skate culture and give us local knowledge.

► SO WHAT'S NEXT...

**We will begin community consultation in February keep an eye out for posters with date and location!**

You can follow whats happening as we progress on the following platforms:

- [www.Skateboard.com.au](http://www.Skateboard.com.au)
- [www.facebook.com/BassCoastSkateParks](http://www.facebook.com/BassCoastSkateParks)
- [www.facebook.com/4shoresk8park/](http://www.facebook.com/4shoresk8park/)
- [www.facebook.com/vortexsurfskatesnow/](http://www.facebook.com/vortexsurfskatesnow/)
- [www.basscoast.vic.gov.au/skate](http://www.basscoast.vic.gov.au/skate)



You're invited to

**"MONDAY MEAL"**  
**COMMUNITY DINNER**

For families & singles  
 - kids welcome.



**WHEN : EVERY MONDAY**  
**EXCEPT SCHOOL HOLIDAYS**  
**AND PUBLIC HOLIDAYS**

**5.30pm start**  
**6.30 pm finish**  
 (doors open at 5.15pm)

**WHERE : St John's Uniting Church**



**Corner of Chapel St**  
**& Warley Ave**  
**Cowes**

**Just come along on the night , or contact Glen on 0408 377 030 if you want further details**

## FREE DENTAL TREATMENT Available to ALL CHILDREN



Bass Coast Health  
Dental Clinic  
Graham Street  
Wonthaggi Vic 3995

**PH: (03) 5671 3268**

Health Care/Pension Card  
Holders  
No Health Care Card

**FREE  
FREE**

Children Dental Benefits Scheme accepted.

### Clinic Times:

Monday – Thursday 8.15am – 4.00pm  
Friday 8.15am – 1.00pm

# FLOWER SHOW

And Photo Exhibition

Includes Plant Stall, Devonshire Teas, Sausage Sizzle.

**SATURDAY  
25<sup>th</sup> MARCH, 2017  
10 a.m. - 4 p.m.**

at  
**St. Philip's Anglican Church  
Thompson Avenue  
Coves**



Members of the public are invited to view the  
exhibits  
**A Gold Coin Donation**

Enquiries and Entry Forms:  
Flower Show: Ruth Routley 5956 9403 Marg Smith 5956 6328  
Photo Comp. Tony Andrews 5952 3042  
email: emarg38@gmail.com



## Big Sing for Bass Coast Children and Youth

with Pete & Ruth Chambers

A unique experience to join in  
song

with youth from the Bass Coast

2 - 4pm

Sunday 19<sup>th</sup> March

at "The Barn"

10 Grandview Grove, Inverloch

## Performance and Community Forum Gambling Awareness

**FREE  
EVENT  
LUNCH  
PROVIDED**



**THREE SIDES OF THE COIN**

**Wednesday 29 March 2017  
from 11am to 1pm**

Cape Paterson Conference Room,  
RACV Inverloch Resort  
70 Cape Paterson-Inverloch Rd, Inverloch

The live performance will be followed by:  
• A short 20 minute screening of the Three Sides of the Coin documentary  
• Panel discussion

Register at:  
<https://www.eventbrite.com.au/e/three-sides-of-the-coin-performance-and-community-forum-tickets-32037617376>

Registration is required  
RSVP by Wednesday 22nd of March

### Three Sides of the Coin

Gamblers Help Gippsland presents Three Sides of the Coin, a powerful theatrical performance by people that have been harmed by gambling.

Three Sides of the Coin explores the lived experience of those harmed by either their own or someone else's gambling addiction and their process to recovery.

Come along to join in on the conversation about gambling as a public health issue and its impacts on the community.

**In 2015/16 Bass Coast and South Gippsland lost \$22.8 million to Pokies... that's \$63,000 a day!!**

For further information contact: Ashlea King  
Gamblers Help Community Education Officer  
Phone: (03) 5136 5246 Email: ashlea.king@ichs.com.au